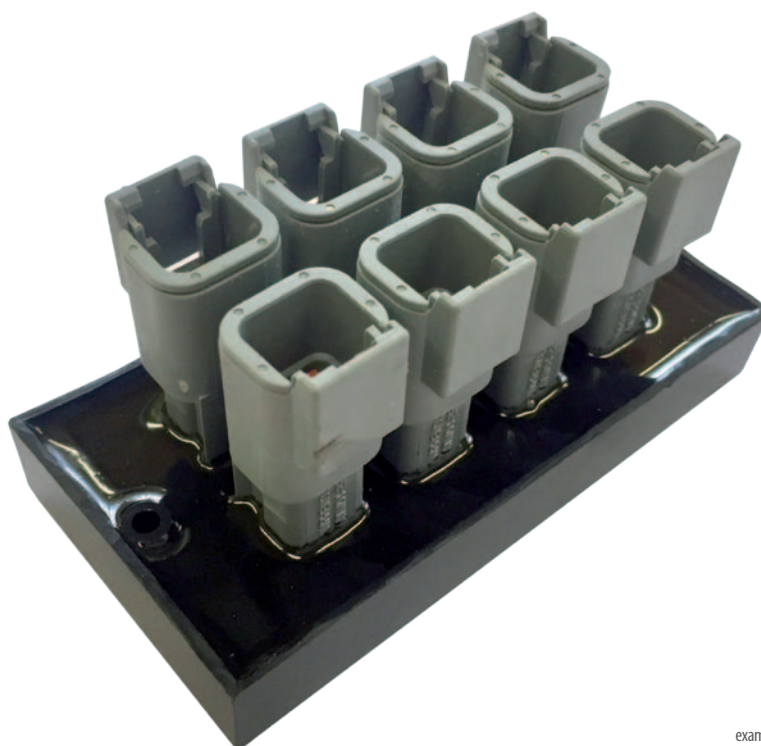


CAN HUB

Manufacturer: SMART-TEC s.r.o.



example photo

| DESCRIPTION:

- Signal distribution in demanding conditions of industrial environments and industrial machines.
- Optimized dimensional and financial solutions for the CAN bus.
- Delivery with or without bus termination.
- Different versions according to the customer's wishes.
- The use of the DT and DTM Deutsch connectors guarantees a high-quality and faultless connection.
- The IP 67 protection is also suitable for use in harsh environments.
- The use in multi-bus systems, such as the commonly used CAN Bus SAE J1939.
- The connection of the pin connectors is compatible with common devices in the market: Pin1: +Pwr, Pin2: GND, Pin3: CAN H, Pin4: CAN L.



SMART-TEC S.R.O., Velké Poříčí 597, CZ - 549 32 Velké Poříčí, ID: 287 85,711, Tax ID: CZ 287 85,711
The company is registered in the Register of Companies, administered by the District Court in Hradec Králové, under Section C, Insert 27265
Bank account: Komerční banka, a.s., account number: 43-6420180287/0100
info@smart-tec.cz, www.smart-tec.cz

Rexroth
Bosch Group

Systemintegrator

www.smart-tec.cz